

Produktinformation & Lieferprogramm

BTLock CV3

Lasak Italia | Dentaldepot
+39 0474 679510 - info@lasak-italia.com
www.lasak-italia.com





BT-Tite CV3

BT-Tite CV3 Line

BT-Tite CV3 line represents the latest development of BTLock implant system. Compared with the other lines, CV3 fixtures present innovative features regarding shape and surface:

- longitudinal grooves;
- platform switching;
- full DMA surface;
- tapered-cylindrical shape;
- deep thread;
- micro-grooves on the collar.

The platform switching consists in the use of an abutment with a smaller diameter than the fixture's one. It allows to switch the margin of the junction implant-abutment towards the centre of the implant axis.

This system promotes the formation of a thicker gingival annulet which allows to obtain significant advantages as biological seal around the abutment.

The longitudinal grooves, situated along the implant body till the collar, make the insertion into the osteotomic site easier and help to download tensile forces, gas, liquids and bone residues which are created during the screwing; moreover, they prevent unscrewing till the first minutes from the insertion and increase the osteointegrating surface.

The terminal part of the collar (0,6 mm), which is treated, works as closure avoiding the infiltration of germs and bacteriums at the crest level. The DMA surface, obtained from physical-mechanical treatments (sandblasting by material at controlled granulometry) and chemical treatments (double acid-etching and passivation at controlled lengths) makes the surface nanoporous and, together with the deep thread, allows a better osteointegration and consequently a better primary stability even in less thick bone.

The fixture is self-threading and anti-rotational.

These features make the CV3 line the best choice for whatever situation, even in case of immediate-load and post-extractive sites.

Patent pending n° 30900.

BTLock Locking System

BTLock fixture-abutment locking system derives from the co-operation of implantologists, technicians, and engineers.

The matching system, internationally patented and defined as 'twice anti-rotational, asymmetric, multi-levelled internal connection', is featured by its design, its depth and the conical bevel.

The connection design is triangular shape featured by the wrap-around angles. The extreme mechanical precision is due to the lathe potentiality to directly create the connection avoiding a counter-shape working which is less precise and more harmful for locking itself.

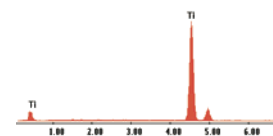
The depth of the connection (2,96 mm) improves tightening and optimizes the distribution of chewing forces along the fixture axis. As consequence, micro-movements are reduced to minimum as well as the risk of deformation of connection with following unscrewing or even breakage of through screw.

A further original and patented feature of BTLock connection is the conical bevel on the fixture with counter-shape on the abutment. These two elements permit a perfect matching between fixture and abutment, without exceeding profiles or gaps. This avoids any fluid infiltration and keeps peri-implant sulcus free of inflammation, decreasing bacteria development.

Size Options


BT-Tite CV3 line is available in 3 diameters (3,75 - 4,5 - 5,5 mm) and 6 different lengths (6,5 - 8 - 10 - 11,5 - 13 - 16) for a total of 18 size options.


It is the recommended choice for immediate loading and in post-extractive sites. Each implant is sold complete of mounting tool and surgical screw.




Surface analysis:
no pollution agents.

Please note: at the end of insertion, the concavity of the implant carrier must be leading to vestibular direction.

Ø 3,75 mm		DESCRIPTION	LENGTH	CODE
		- Diameter of fixture body: 3,75 mm	6,5 mm	375065 BTICV3
		- Diameter of periodontal collar: 3,75 mm	8 mm	37508 BTICV3
		- Surface: DMA	10 mm	37510 BTICV3
			11,5 mm	375115 BTICV3
			13 mm	37513 BTICV3
			16 mm	37516 BTICV3

Ø 4,50 mm		DESCRIPTION	LENGTH	CODE
		- Diameter of fixture body: 4,5 mm	6,5 mm	450065 BTICV3
		- Diameter of periodontal collar: 4,5 mm	8 mm	45008 BTICV3
		- Surface: DMA	10 mm	45010 BTICV3
			11,5 mm	450115 BTICV3
			13 mm	45013 BTICV3
			16 mm	45016 BTICV3

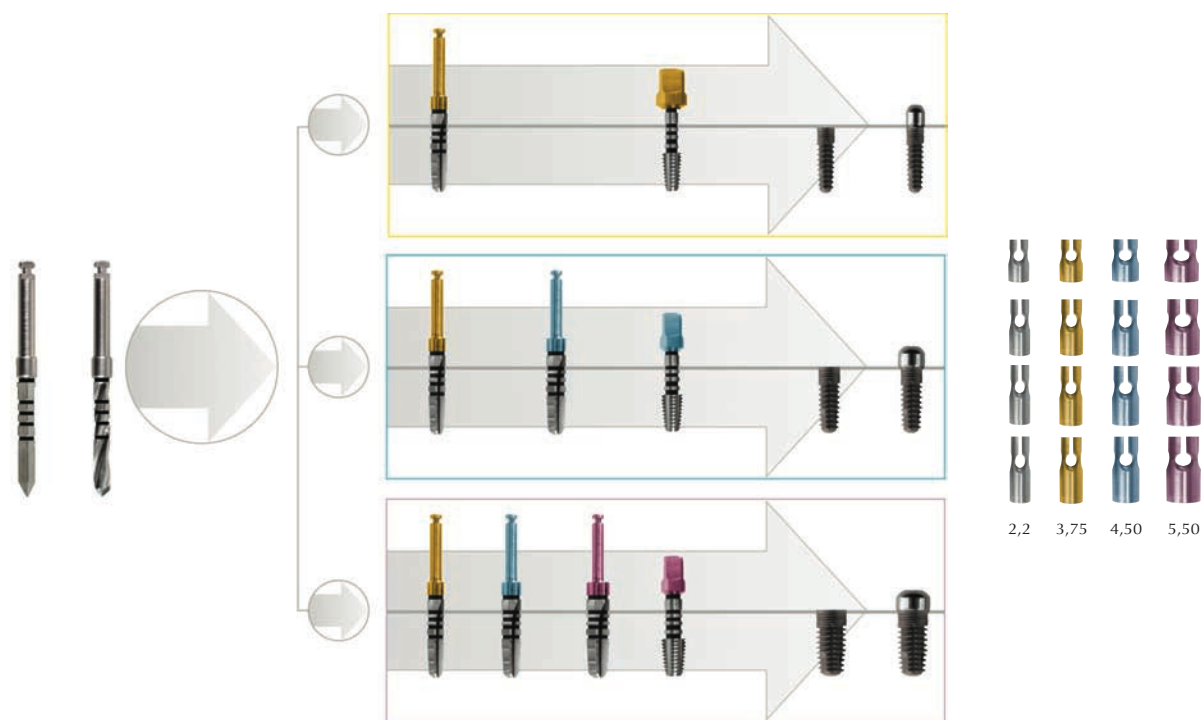
Ø 5,50 mm		DESCRIPTION	LENGTH	CODE
		- Diameter of fixture body: 5,5 mm	6,5 mm	550065 BTICV3
		- Diameter of periodontal collar: 5,5 mm	8 mm	55008 BTICV3
		- Surface: DMA	10 mm	55010 BTICV3
			11,5 mm	550115 BTICV3
			13 mm	55013 BTICV3
			16 mm	55016 BTICV3

Pictures have only an indicative function. All the products illustrated in this brochure may be slightly different from the real ones.

Surgical Protocol and Prosthetic Components

Surgical Protocol and Drill Stops

BTLock offers two different options as surgical protocol for implant insertion: traditional (by drills) or by expanders. The traditional protocol (please see the picture), requires the use of different kinds of drills (pilot, twist, and conical) and of threadformers. As the others BTLock fixtures, also BT-Tite CV3 fixtures are self-threading so they do not require the use of threadformers except in case of hard bone. All drills are characterized by laser markings and colour code to make easier the use and the selection during the surgical stage. Stops for drills are available to better control the drills' cutting power.



Prosthetic Components

HEALING SCREW



Diameter	H. 2 mm	H. 3,5 mm	H. 5 mm	H. 6 mm	H. 7 mm
3,75	375A BTIVG3	375B BTIVG3	375C BTIVG3	375D BTIVG3	375E BTIVG3
4,50	450A BTIVG3	450B BTIVG3	450C BTIVG3	450D BTIVG3	450E BTIVG3
5,50	550A BTIVG3	550B BTIVG3	550C BTIVG3	550D BTIVG3	550E BTIVG3

ANALOGUE



Diameter	Code
3,75	375 BTIANL3
4,50	450 BTIANL3
5,50	550 BTIANL3

RETENTIVE TRANSFER



Diameter	Code
3,75	375 BTITRL3
4,50	450 BTITRL3
5,50	550 BTITRL3

CASTABLE ABUTMENT



Diameter	Code
3,75	375 BTIMCL3
4,50	450 BTIMCL3
5,50	550 BTIMCL3

TRANSFER WITH CAP



Diameter	Code
3,75	375 BTITL3C
4,50	450 BTITL3C
5,50	550 BTITL3C

STANDARD ABUTMENT



Diameter	Code
3,75	375 BTIPML3
4,50	450 BTIPML3
5,50	550 BTIPML3

ANGLED ABUTMENT



Diameter	10°	18°	25°
3,75	375A BTIPMLI3	375B BTIPMLI3	375C BTIPMLI3
4,50	450A BTIPMLI3	450B BTIPMLI3	450C BTIPMLI3
5,50	550A BTIPMLI3	550B BTIPMLI3	550C BTIPMLI3

SHOULDER ABUTMENT



Diameter	H. 1 mm	H. 2 mm	H. 3 mm
3,75	375A BTIPMLS3	375B BTIPMLS3	375C BTIPMLS3
4,50	450A BTIPMLS3	450B BTIPMLS3	450C BTIPMLS3
5,50	550A BTIPMLS3	550B BTIPMLS3	550C BTIPMLS3

ZIRCONIUM-TITANIUM ABUTMENT



Diameter	Code
3,75	375 BTIPMZT3
4,50	450 BTIPMZT3
5,50	550 BTIPMZT3

LOCK GOLD UCLA



Diameter	Code	CASTABLE
3,75	375 BTIUOL3	375 BTICSF3
4,50	450 BTIUOL3	450 BTICSF3
5,50	550 BTIUOL3	550 BTICSF3

TEMPORARY LOCK ABUTMENT FOR IMMEDIATE LOAD



Diameter	Code
3,75	375 BTIPML13
4,50	450 BTIPML13
5,50	550 BTIPML13

LOCK OVERMELTING TRANSMUCOSAL NECK



Diameter	H. 1,7 mm	H. 2,7 mm	CASTABLE
3,75	375B BTICTLS3	375C BTICTLS3	375 BTICSF3
4,50	450B BTICTLS3	450C BTICTLS3	450 BTICSF3
5,50	550B BTICTLS3	550C BTICTLS3	550 BTICSF3

IMMEDIATE-LOADING ABUTMENT WITH ROTATIONAL CAP



Diameter	Code	Cap
3,75	375 BTIMP33	375 BTICAPMP33
4,50	450 BTIMP33	450 BTICAPMP33
5,50	550 BTIMP33	550 BTICAPMP33

IMMEDIATE-LOADING ABUTMENT WITH FIXED CAP



Diameter	Code	Cap
3,75	375 BTIMP43	375 BTICAPMP43
4,50	450 BTIMP43	450 BTICAPMP43
5,50	550 BTIMP43	550 BTICAPMP43

OVERDENTURE WITH RETAINING CAP



Diameter	H. 1 mm	H. 2,7 mm
3,75	375A BTIPMOC3	375C BTIPMOC3
4,50	450A BTIPMOC3	450C BTIPMOC3
5,50	550A BTIPMOC3	550C BTIPMOC3

OVERDENTURE WITH CAP



Diameter	H. 1 mm	H. 2,7 mm
3,75	375A BTIPMOCO3	375C BTIPMOCO3
4,50	450A BTIPMOCO3	450C BTIPMOCO3
5,50	550A BTIPMOCO3	550C BTIPMOCO3

OVERDENTURE WITH O-RING



Diameter	H. 1 mm	H. 2,7 mm
3,75	375A BTIPMOR3	375C BTIPMOR3
4,50	450A BTIPMOR3	450C BTIPMOR3
5,50	550A BTIPMOR3	550C BTIPMOR3

PASSIVE ABUTMENT



Diameter	H. 0 mm	H. 1 mm	H. 2 mm	CASTABLE	ANALOGUE	TRANSFER
3,75	375A BTIMP13	375B BTIMP13	375C BTIMP13	375 BTICMP13	375 BTIANP3	375 BTITMP3
4,50	450A BTIMP13	450B BTIMP13	450C BTIMP13	450 BTICMP13	450 BTIANP3	450 BTITMP3
5,50	550A BTIMP13	550B BTIMP13	550C BTIMP13	550 BTICMP13	550 BTIANP3	550 BTITMP3

STRAIGHT SCREWABLE ABUTMENT



Diameter	H. 1 mm	H. 2,5 mm	H. 4 mm	H. 5,50 mm	CASTABLE
3,75	375A BTIMP23	375B BTIMP23	375C BTIMP23	375D BTIMP23	375 BTICMP23
4,50	450A BTIMP23	450B BTIMP23	450C BTIMP23	450D BTIMP23	450 BTICMP23
5,50	550A BTIMP23	550B BTIMP23	550C BTIMP23	550D BTIMP23	550 BTICMP23

ANGLED SCREWABLE ABUTMENT



Diameter	H. 1 mm 15°	H. 1 mm 25°	H. 2,5 mm 15°	H. 2,5 mm 25°	CASTABLE
3,75	375A BTIMP1153	375A BTIMP1253	375B BTIMP1153	375B BTIMP1253	375 BTICMP123
4,50	450A BTIMP1153	450A BTIMP1253	450B BTIMP1153	450B BTIMP1253	450 BTICMP123
5,50	550A BTIMP1153	550A BTIMP1253	550B BTIMP1153	550B BTIMP1253	550 BTICMP123